

POOJA MODEL SCHOOL

From Huts to High-

Rises Class-5 Science



INTRODUCTION

People build different houses depending on climate, materials, and budget. Some have flat or sloping roofs, or are on stilts. Houses help keep us safe. Let's explore why houses are so different!



Factors that determine the type of house

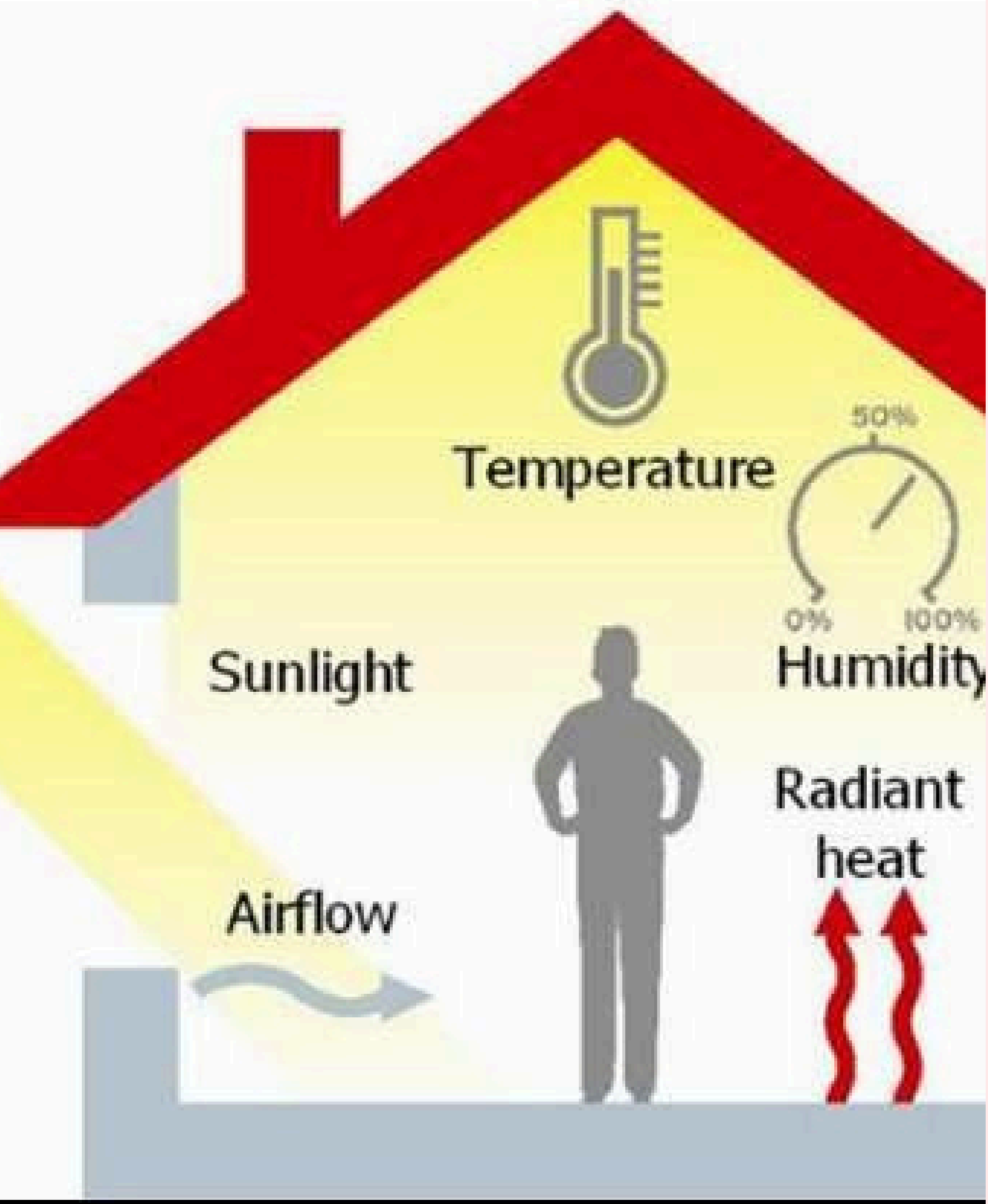
 **Climate of the Place**

 **Materials to be Used**

 **Budget Available**



CLIMATE OF PLACE

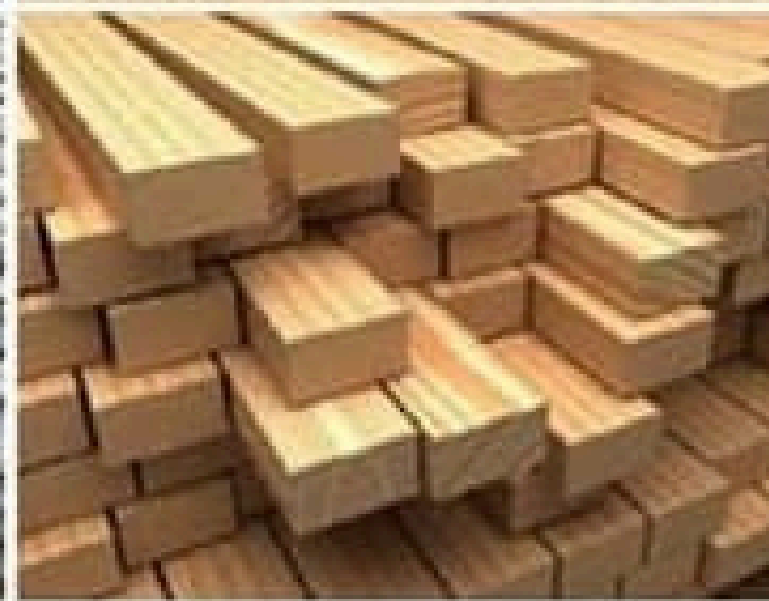


Hot places have flat roofs and thick walls to stay cool, while rainy or snowy places have sloping roofs or houses on stilts.



Material to be Used

People use local materials like mud, wood, bamboo, or stone, which help keep houses cool, dry, or warm depending on the climate.





Budget Available

Budget means how much money people have to build a house. More money allows bigger, better homes, while less money means simpler houses. Material costs also affect what type of house people build.



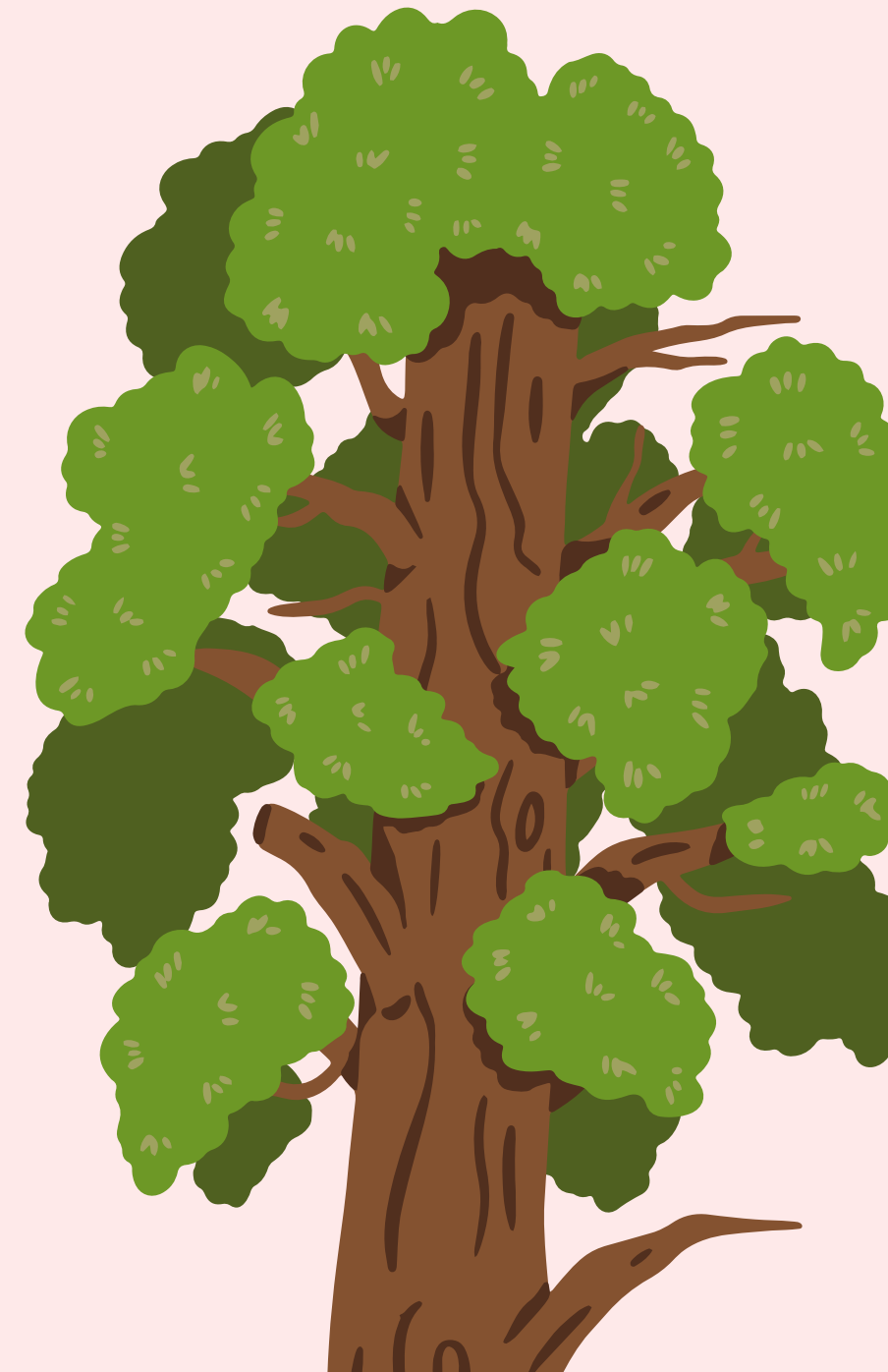
TYPES OF HOUSES

- **Kutchra**
- **House Pucca**
- **House High-rise**
- **Buildings**



Kutchra House

Katcha houses are made with natural or temporary materials like mud, wood, or ice. Examples include mud house, stilt house, and igloo.



Mud House



**Made using mud, clay, and straw.
Common in rural areas and not very strong.**

Stilt House

Built on wooden or bamboo poles above ground.



Igloo

**Made of blocks of
ice and snow
Found in very cold polar
regions like the Arctic.**



Pucca house

Puccahousesarebuiltwithstrong,
permanent materials like bricks,
cement, and concrete.

- 1.Slooping roof house.
- 2.Building



Sloping Roof House

**Has sloped roof to let rain
or snow slide off.
Common in hilly or snowy
regions.**





Buildings

Multi-storey structure made with bricks, cement, and steel.

Found in cities and towns for residential or commercial use.

Thankyou

Happy Learning 